



## NEWINGTON LONDON

2 Bedrooms

Apartment

Located in London

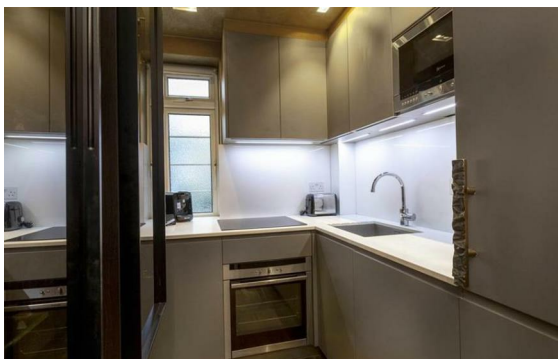
£1,385 Per Month



[info@newingtonstates.com](mailto:info@newingtonstates.com)

<http://www.newingtonstates.com>

020 7724 2233



An exceptional, brand newly renovated two-bedroom apartment set within a highly sought-after portered building directly opposite Hyde Park. Finished to an outstanding contemporary standard throughout, the property features bright and well-proportioned rooms, high-quality fittings, and elegant modern décor.

Ideally positioned in one of London's most desirable locations, the building offers excellent security and convenience, with Hyde Park quite literally on the doorstep and the superb amenities of Marble Arch and Mayfair just moments away.

EPC rating: C

## Energy Efficiency Rating: D

Agents Note: Whilst every care has been taken to prepare these particulars, they are for guidance purposes only. All measurements are approximate and are for general guidance purposes only and whilst every care has been taken to ensure their accuracy, they should not be relied upon and potential buyers/tenants are advised to recheck the measurements.

# NEWINGTON LONDON

60 Upper Montagu Street

London

W1H 1SN

020 7724 2233

[info@newingtonstates.com](mailto:info@newingtonstates.com)

<http://www.newingtonstates.com>